

## General Information about Year 1

**Reading books** each week your child will be heard by their teacher in Guided Reading. The book that they read here will be challenging. The book that is set for homework will be at a level your child should be able to read fluently even if it takes a couple of practises. Please try to make reading time as relaxed and enjoyable as possible and if they are tired enjoy a story where you read the text. Just note it in the diary.

Library books are a free choice and may be at a higher level than their reading, again just enjoy and share it and talk about why they chose that book.

**Homework** will be sent home on a Friday and will link to the work children have been doing in class, there will be some homework from all areas of the curriculum over the term but with a larger focus on Literacy and Numeracy. Homework should be returned by the Wednesday of the following week to allow the teachers time to mark and prepare the next piece of homework. Please develop independence this term and allow your child to complete homework themselves- thank you for your ongoing support with this.

**Spellings** Your child will be tested on their given spellings every Thursday and sent home with a new set of spellings by Friday. These spellings will be covering sounds the children have already learnt in their phonics sessions. Please ensure spellings books are in school everyday and please note that it is very important that children practise their spellings at home, so they can feel successful in their tests in school.

**Forest school dates:** comes to school with in order for them to sions. Please be sions the children

Wednesday 18 <sup>th</sup> April	1R
Thursday 19 <sup>th</sup> April	1W
Wednesday 25 <sup>th</sup> April	1R
Thursday 26 <sup>th</sup> April	1W
Wednesday 2 <sup>nd</sup> May	1R
Thursday 3 <sup>rd</sup> May	1W
Wednesday 9 <sup>th</sup> May	1R
Thursday 10 <sup>th</sup> May	1W
Wednesday 16 <sup>th</sup> May	1R
Thursday 17 <sup>th</sup> May	1W
Wednesday 23 <sup>rd</sup> May	1R
Thursday 24 <sup>th</sup> May	1W

Please ensure your child their forest school clothes participate in their ses- aware that in these ses- are likely to get dirty!

# Famous People

ESWONS PEOPLE

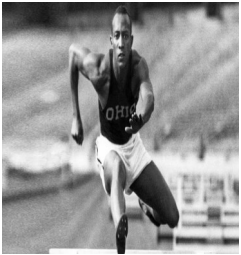


## Welcome to Summer Term Year 1 2018

We hope you have had a lovely Easter and are ready for the final term of Year 1.

## The Year 1 team this year is:

1R—Mrs Robb & Mrs Tunney  
1W—Miss Wild & Mrs Jackson & Miss Hopkins



### Numeracy

We will be following the White Rose maths scheme and will focus this term on multiplication and division, fractions, time, money and refining our written strategies of addition and subtraction.



### Literacy

### P.E

**Indoor P.E**— Gymnastics using apparatus

**Outdoor P.E**— Striking and fielding games

### Science

Children will be identifying common names of plants and trees and investigating what plants need.

Children will also continue to look at seasonal chang-

### Topic

This term we will be focussing on the work of famous people such as Da Vinci, Queen Elizabeth I, Van Gogh and famous sporting people including Jessie Owens.

### D.T

We are going to become inventors!  
(Please start saving junk modelling boxes)



### Music

Children will be exploring different sounds as they develop their ability to keep a beat.

### Guided reading

Children will be reading at least once a week with an adult in school. During the lessons, children will continue to access reading related activities building on their comprehension

### RE

Children will be exploring how Christians talk to God.

### Computing

Children will be investigating and developing their programming skills; learning how to program and direct a Bee-Bot.

### Phonics

The children will continue to take part in daily 30 minute sessions, where they will learn new phonic sounds and how to apply them to their writing.

### PSHE

Our topics are 'Getting on and falling out' where we will be looking at how to deal with any problems we have with our friends.